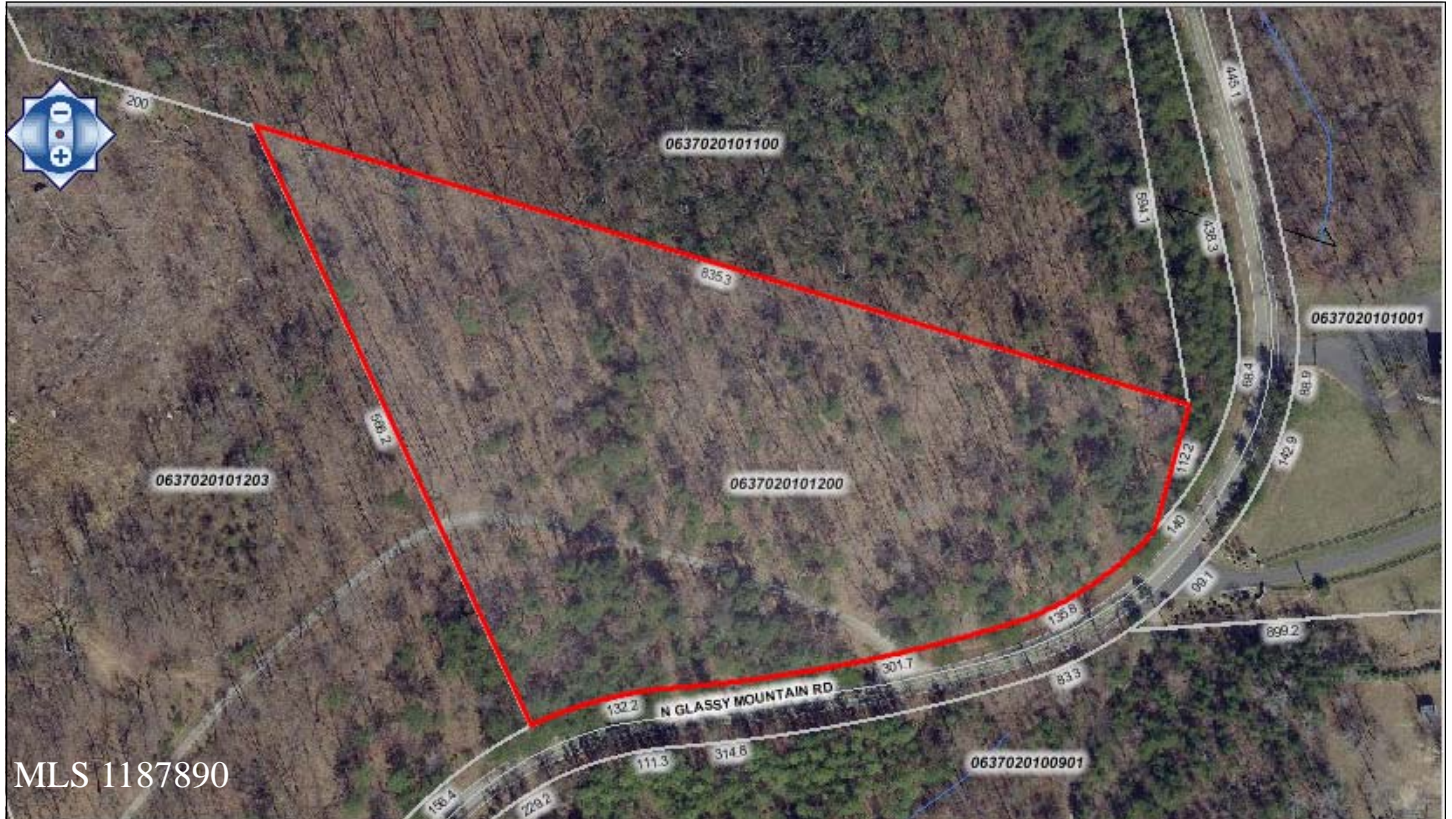


5.01± ACRES
NORTHERN GREENVILLE COUNTY
LANDRUM, SC



North Glassy Mountain Road, Greenville County, SC

This naturally forested property features a variety of hardwoods, great views of Glass Mountain, and is ideal for a single-family estate in the foothills with acreage to enjoy. Located between Highway 11 and Highway 414, the property offers excellent views of Glassy Mountain. Minutes from North Greenville University, Cliffs at Glassy and Gowensville.

- Restrictive Covenants
- Within 45 minutes of downtown Greenville
- Within 35 minutes of downtown Spartanburg

Only \$59,900

Contact Scott Cornelson or Pat McNamara for more information.

CAROLINA
LAND COMPANY
THE LAND BROKERS

PO BOX 787
GREENVILLE, SC 29602

WWW.CAROLINALANDCOMPANY.COM

PHONE: 864-232-6922
FAX: 864-271-0370

No warranty or representation, expressed or implied, is made regarding the accuracy of the information contained herein, and it is submitted subject to errors, omissions, change of price, withdrawal without notice, and to any other special listing conditions imposed by our principals.

